

## Easy on You—Tough on Security

Reflection® for NonStop® 2011 Add-On is terminal emulation software that connects Windows 7 or Windows Vista users to applications on HP NonStop (Tandem) systems. This add-on to Reflection 2011 supports multiple operating systems, diverse security architectures, and application virtualization infrastructures. What's more, it is based on Microsoft .NET for enhanced programmatic control and a richer user experience.

### With Reflection for NonStop 2011, you can:

- Take full advantage of next-generation Microsoft Windows and Office security and productivity features, including the Ribbon user interface, .NET, and Windows Error Reporting (WER).
- Support modern operating environments, including Microsoft Windows 7, Windows Vista, Windows Server 2008, Microsoft App-V, VMware, and Citrix XenApp.
- Integrate legacy applications with Microsoft Office, allowing users to easily use and share NonStop host data.
- Provide a consistent experience for users accessing other host types supported by Reflection 2011.
- Give users seamless access to host applications with support for single sign-on.

### Upgrade Information for EXTRA! 6530 Client Option Users

Reflection for NonStop 2011, which combines the best features of the EXTRA!® 6530 Client Option and Reflection 2011 products, is the upgrade product for EXTRA! 6530 Client Option users upgrading to Reflection 2011 and running Windows 7 or Windows Vista.

### What's New in Reflection for NonStop 2011?

- Support for modern operating environments, including Windows 7, Windows Vista, Windows Server 2008, Microsoft App-V, VMware, and Citrix XenApp.
- Microsoft Ribbon user interface mode.
- Integration with Microsoft Office 2010 and .NET.
- Multiple Document Interface (MDI) with tabs and tiles.
- Ability to designate trusted locations from which session files and macros must run.
- Enhanced SSH support, including SSH keyboard interactive authentication.
- Improved copy-to-clipboard functionality.
- Single-sign-on support via Kerberos and GSSAPI.

## Product Highlights

### Satisfy the Latest Security Requirements

Reflection for NonStop 2011 is designed to help you meet internal and external security requirements. Integrated security components provide the latest Secure Shell (SSH) encryption and authentication technologies. This high level of security helps you comply with PCI, Sarbanes-Oxley, HIPAA, and Basel III mandates.

### Boost User Productivity with Quick, Streamlined Functions

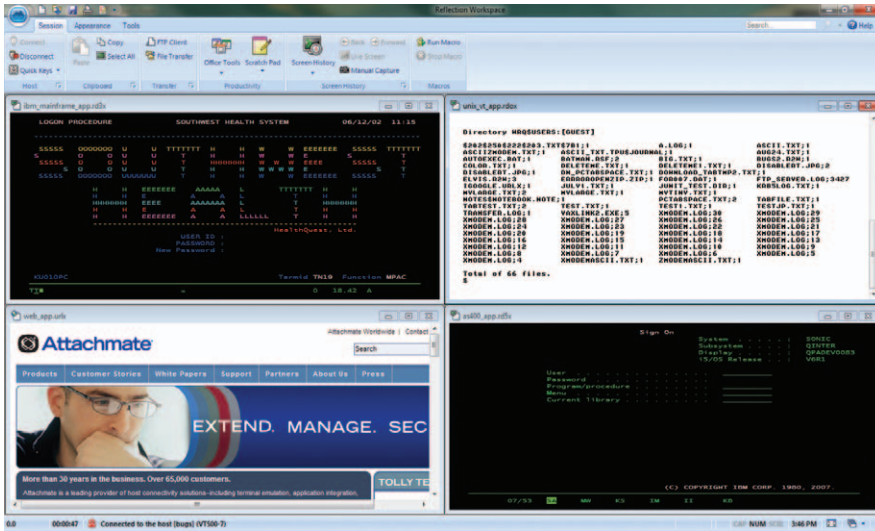
Reflection for NonStop 2011 has all the productivity essentials your users need. For example, integration with Office 2010 allows users to drop host data into an e-mail with the click of a button, print multiple host screens at once, and search for data using Bing. And the UI Designer tool lets you build custom ribbons to match your user workflows.

### Integrate Critical Technologies

Reflection for NonStop 2011 supports a mix of existing and emerging IT technologies, including next-generation Windows 7, Windows Vista, Active Directory, Group Policy, Microsoft App-V, VMware, Citrix XenApp, and IPv6.

### Get Virtualization-Ready

Reflection for NonStop 2011 makes it easier for you to manage emulation on the desktop. Optimized for and tested on the leading virtualization platforms, Reflection delivers all the related benefits—from automated deployment to easier upgrading, patching, and migrating. Users benefit too, from on-demand use and optimal performance.



With Reflection's Multiple Document Interface, you can view all host and web applications in a single frame.

## TECHNICAL SPECIFICATIONS

### Emulation Types

- HP NonStop (Tandem):  
 - 6530

### Security

- SSH encryption
- NEW** • SSH keyboard interactive authentication
- NEW** • Single-sign-on (SSO) support via Kerberos and GSSAPI

### Productivity Features

- Attachmate implementation of the Microsoft Ribbon user interface
- Classic mode user interface for EXTRA! 6530 Client Option users
- Ribbon customization utility
- FTP file transfer support
- IXF file transfer support
- Keyboard remapper

- Macro recorder and editor
- Scratch Pad
- Screen print
- Copy/paste

### Client Operating System Support

- Windows 7
- Windows Vista



**Corporate Headquarters**  
 1500 Dexter Avenue North  
 Seattle, Washington 98109  
 TEL 206 217 7500  
 800 872 2829  
 FAX 206 217 7515

**EMEA Headquarters**  
 The Netherlands  
 TEL +31 172 50 55 55  
 FAX +31 172 50 55 51

**Asia Pacific Headquarters**  
 Australia  
 TEL +61 3 9825 2300  
 FAX +61 3 9825 2399

**Latin America Headquarters**  
 Mexico  
 TEL +52 55 9178 4970  
 FAX +52 55 5540 4886

WEB [attachmate.com](http://attachmate.com)  
 E-MAIL [info@attachmate.com](mailto:info@attachmate.com)

For regional office information, visit [www.attachmate.com](http://www.attachmate.com).