



MODERNIZING ENTERPRISE FILE TRANSFER

Everyone transfers files. You've been doing it for years. The question is, have you outgrown your existing file transfer solution?

The world of file transfer has changed dramatically over the last decade. Today your solution must handle more files, bigger files, and files traveling to faraway places. It must comply with new, more stringent security regulations. And it must do all these things without draining your IT resources.

Attachmate® FileXpress® software meets your modern file transfer challenges head on. Can you say the same of your existing solution?





FileXpress: Today's Enterprise File Transfer Solution

More than a simple file transfer utility, FileXpress is an enterprise solution that provides:

- Customer- and partner-friendly file exchanges
- End-to-end automation
- File transfers of any size
- Reliable delivery
- Centralized visibility and control
- Comprehensive security

HOW OUTDATED IS YOUR FILE TRANSFER SYSTEM?

Ask yourself these 6 questions to find out.

- 1** *Is your file transfer system able to address the growing demands of partners and customers, now and in the future?*

As your B2B interactions grow, so will your file transfer requirements. Multiplatform support. Secure communications. User-interface options. Scalability. All must be accounted for.

FileXpress is built for the Internet universe. It enables file transfers over the Internet and across all platforms, from Windows to the mainframe. It includes the latest security protocols, including HTTPS, FTPS, SFTP, PGP over FTP, and AS2. It supports browser interfaces along with file transfer clients. And it lets you easily add new trading partners as needed. The result: effective B2B integration with your partners, vendors, suppliers, and customers.

- 2** *Are you spending too much time writing and maintaining complex scripts to automate your file transfers?*

The productivity benefits of automated file transfers are clear. But the time saved by users translates into hours lost for system administrators tasked with building the complex scripts that make automation possible.

Not with FileXpress. Built-in capabilities handle event-driven transfers via hotfolders, file integrity checking, and automatic retries. FileXpress even initiates the processing of files after they are successfully transferred. You get all the benefits of automation, minus all the burdens.

- 3** *Do large files take too long to transfer or frequently fail to reach their destinations?*

Legacy file transfer technologies often fall short when it comes to transferring large, unwieldy files. Take FTP, for example. It offers no recovery mechanism when transfers fail. It cannot pick up interrupted transfers where they left off. And when network latency increases, FTP slows to a crawl.

Designed with large file transfers in mind, FileXpress offers automatic retries, checkpoint restart, and built-in RocketStream technology. RocketStream uses the UDP and PDP protocols to maximize the speed and performance of large files over long distances. In fact, RocketStream transfers are up to 30 times faster than traditional FTP transfers.

- 4** *How reliable is your file transfer process, both inside and outside the organization?*

In a perfect world, your file transfers would be reliable, accurate, complete, and timely. But all too often, the file transfer process is missing one of these critical elements.

With capabilities such as automated retries, packet-level data integrity checks, exception alerts, and file transfer queuing, FileXpress detects problems, notifies senders, and recovers transfers when transmissions fail.

- 5** *Is file transfer sprawl keeping you from effectively tracking and controlling file transfer activity across your organization?*

It's nearly impossible to accurately audit and report on all the file transfers occurring across an organization. And it's equally challenging to configure all the systems involved in moving data from point A to B.

FileXpress provides a virtual harness for your file transfer activity. Using a powerful browser-based user interface, you can go to one central location to define file transfer servers and configure the transfers between them. You can also access detailed information on every file transfer that occurs.

- 6** *Does your file transfer system support the controls you employ to comply with internal and external security mandates?*

Data in motion is vulnerable. Every time it moves across the network, there's risk involved.

FileXpress helps you manage that risk. It provides comprehensive support for the latest authentication, authorization, and encryption technologies, along with detailed auditing of all file transfer activity. Furthermore, delegated administration capabilities ensure that system administrators are given the appropriate level of control—based on organizational role and security status.

THE FILEXPRESS PRODUCT FAMILY

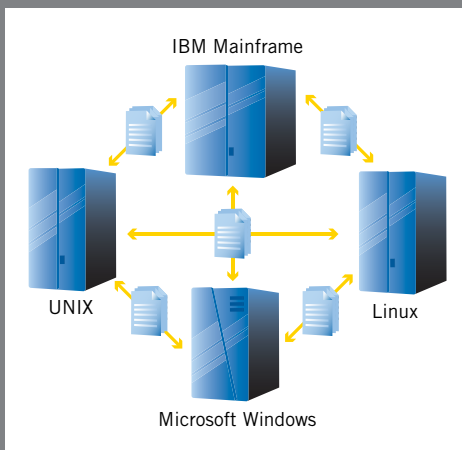
Attachmate FileXpress products manage and execute the secure delivery of any-size files, across all major platforms, to any location.

FileXpress Platform Server

FileXpress Platform Server is the engine that powers your file transfer infrastructure. It securely delivers files of any size, across all major platforms, to any location.

With FileXpress Platform Server, you can:

- Provide consistent file transfer functionality across IBM z/OS, Windows, UNIX, and Linux systems.
- Support service-level agreements with reliable delivery capabilities, including robust event alerts, automatic retries, and packet-level data integrity checking.
- Receive notification when file transfers are successful—and when they fail.
- Watch specific directories and automatically transfer files placed into them.
- Automate the transfer and post-transfer processing of files.



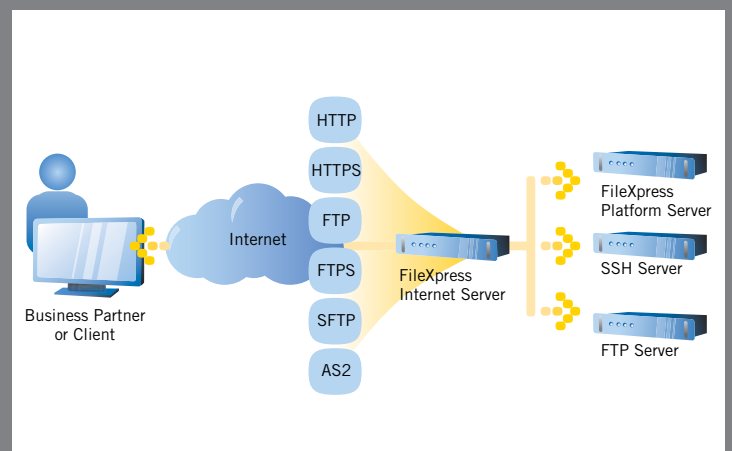
Internal intra-server transfers with FileXpress Platform Server.

FileXpress Internet Server

FileXpress Internet Server is the portal through which all Internet-traveling files flow. Built to support the latest web and security technologies, it lets you safely interact with partners and customers around the globe.

With FileXpress Internet Server, you can:

- Make files available to partners and customers.
- Allow partners and customers to upload files to your internal servers.
- Brand your own file transfer web page, where users can pick up and drop off files.
- Seamlessly move files from outside your corporate network, through the DMZ, to internal target servers.
- Delegate administrative and account management tasks to partners and helpdesk personnel.
- Support the file transfer protocols required by your partners, including HTTPS, FTP, FTPS, SFTP, PGP over FTP, and AS2.



Internet-based file exchanges with FileXpress Internet Server.

CONTINUED ...

FileXpress Command Center

FileXpress Command Center is your digital dashboard for all file transfer activity inside and outside the enterprise. Transfer-related events can be initiated, tracked, logged, audited, and supported—all from one central location.

With FileXpress Command Center, you can:

- Centrally administer your file transfer infrastructure via a web browser.
- Configure and execute file transfers between multiple remote servers.
- Access detailed audit records for all transfers across all platforms.
- Use reporting tools to provide meaningful data on file transfer activity.
- Extend the execution and management of file transfer activity to new applications via service-oriented architectures.

Reflection® for Secure IT Now Bundled with FileXpress

Each FileXpress product comes bundled with the Reflection for Secure IT Windows Client. With this client, you can:

- Transfer files with a graphical drag-and-drop utility that supports FTP, SFTP (SSH), FTPS (SSL), and SCP.
- Connect to any standards-based SSH server for system administration or remote command execution (including the configuration and testing of FileXpress functions).
- Access corporate applications over encrypted connections.

Reflection for Secure IT can be used with FileXpress or on its own. Either way, it expands and strengthens your managed file transfer capabilities.

About Attachmate

Attachmate delivers advanced software for terminal emulation, application integration, and secure communications. Our NetIQ business provides solutions for automating IT processes and managing performance, security, and compliance of distributed IT. With our technologies, more than 65,000 businesses worldwide are putting their IT assets to work in new and meaningful ways. www.attachmate.com.



Corporate Headquarters
1500 Dexter Avenue North
Seattle, Washington 98109
TEL 206 217 7500
800 872 2829
FAX 206 217 7515

EMEA Headquarters
The Netherlands
TEL +31 172 50 55 55
FAX +31 172 50 55 51

Asia Pacific Headquarters
Australia
TEL +61 3 9825 2300
FAX +61 3 9825 2399

Latin America Headquarters
Mexico
TEL +52 55 9178 4970
FAX +52 55 5540 4886

WEB attachmate.com
E-MAIL info@attachmate.com

For regional office information, visit www.attachmate.com.

Provided for informational use only; may be modified at any time without notice.

© 2009 Attachmate Corporation. All Rights Reserved. Attachmate, the Attachmate symbol, FileXpress, and Reflection are registered trademarks of Attachmate Corporation in the USA. All other trademarks, trade names, or company names referenced herein are used for identification only and are the property of their respective owners. 09-0028A4.0110